

Cryogenic ion trapping systems with surface-electrode traps

P. B. Antohi, D. Schuster, G. M. Akselrod, J. Labaziewicz, Y. Ge, Z. Lin, W. S. Bakr, and I. L. Chuang

Citation: *Review of Scientific Instruments* **80**, 013103 (2009); doi: 10.1063/1.3058605

View online: <http://dx.doi.org/10.1063/1.3058605>

View Table of Contents: <http://scitation.aip.org/content/aip/journal/rsi/80/1?ver=pdfcov>

Published by the [AIP Publishing](#)

Articles you may be interested in

[Modular cryostat for ion trapping with surface-electrode ion traps](#)

Rev. Sci. Instrum. **84**, 043112 (2013); 10.1063/1.4802948

[Cryogenic linear Paul trap for cold highly charged ion experiments](#)

Rev. Sci. Instrum. **83**, 083115 (2012); 10.1063/1.4742770

[Surface-electrode ion trap with integrated light source](#)

Appl. Phys. Lett. **98**, 214103 (2011); 10.1063/1.3593496

[A cryogenic surface-electrode elliptical ion trap for quantum simulation](#)

J. Appl. Phys. **109**, 076103 (2011); 10.1063/1.3565053

[Individual addressing of ions using magnetic field gradients in a surface-electrode ion trap](#)

Appl. Phys. Lett. **94**, 094103 (2009); 10.1063/1.3095520



You don't still use this cell phone

or this computer

Why are you still using an AFM designed in the 80's?

It is time to upgrade your AFM

Minimum \$20,000 trade-in discount for purchases before August 31st

Asylum Research is today's technology leader in AFM

dropmyoldAFM@oxinst.com

OXFORD
INSTRUMENTS
The Business of Science®

Cryogenic ion trapping systems with surface-electrode traps

P. B. Antohi,^{1,a)} D. Schuster,² G. M. Akselrod,¹ J. Labaziewicz,¹ Y. Ge,¹ Z. Lin,¹ W. S. Bakr,³ and I. L. Chuang¹

¹*Department of Physics, Center for Ultracold Atoms, Massachusetts Institute of Technology, Cambridge, Massachusetts 02139, USA*

²*Department of Applied Physics, Yale University, New Haven, Connecticut 06511, USA*

³*Department of Physics, Center for Ultracold Atoms, Harvard University, Cambridge, Massachusetts 02138, USA*

(Received 30 July 2008; accepted 6 December 2008; published online 7 January 2009)

We present two simple cryogenic rf ion trap systems in which cryogenic temperatures and ultra high vacuum pressures can be reached in as little as 12 h. The ion traps are operated either in a liquid helium bath cryostat or in a low vibration closed cycle cryostat. The fast turn around time and availability of buffer gas cooling made the systems ideal for testing surface-electrode ion traps. The vibration amplitude of the closed cycled cryostat was found to be below 106 nm. We evaluated the systems by loading surface-electrode ion traps with $^{88}\text{Sr}^+$ ions using laser ablation, which is compatible with the cryogenic environment. Using Doppler cooling we observed small ion crystals in which optically resolved ions have a trapped lifetime over 2500 min. © 2009 American Institute of Physics. [DOI: 10.1063/1.3058605]

I. INTRODUCTION

In this paper we detail the construction and characterize the performance of two cryogenic ion traps systems, designed for trapping $^{88}\text{Sr}^+$ ions. Ion traps operated at liquid helium temperature offer several advantages and pose some challenges compared to room temperature ultrahigh vacuum (UHV) systems. The cryogenic environment produces high vacuum and subsequently reduces the collision rate with the background gas.¹ Moreover the low temperatures reduce the electrical (Johnson) noise and the anomalous heating of trapped ions.^{2–8} Cryogenic systems also present some technical advantages compared with room temperature systems. The time necessary to reach UHV pressures can be 12 h or less. Since the cryogenic temperature suppresses outgassing, the range of materials that can be used for the trap construction is increased, as they do not have to be UHV compatible. However, some of the methods used in room temperature ion trap systems are not directly transferable to a cryogenic system since careful attention must be paid in how the cryogenic system handles the thermal loads. One important problem with the standard high-temperature ion sources is that they are not compatible with the cryogenic environment due to the high heat load. We found that a compatible ion source can be obtained through a laser ablation method, which was demonstrated in earlier experiments.^{9–13} Although care must be taken to provide appropriate thermal anchoring and isolation, it is possible to use all conventional ion sources, including photoionization and electron impact ionization of atoms produced by an oven. In this paper we focus on laser ablation because it is simple and able to load a variety of species. Another problem is that the rf dissipation can locally heat the trap electrodes, which in the case of a cryogenic system re-

quires a very good thermal contact to the cryostat baseplate in order to dissipate the generated heat. To address this problem we used optical lithography techniques to fabricate a surface-electrode ion trap since the planar aspect of this trap simplifies the anchoring to the helium baseplate. In addition, surface-electrode traps are easily integrable in multiplexed ion traps as a proposed scheme for the realization of a large-scale quantum computer.^{14–18}

Cryogenic ion traps allow for exploring new physics, such as the quantum interaction between superconductors and ions.¹⁹ Proposals for a quantum information processor based on trapped ions require the ions to be cooled to the motional ground state, and decoherence rates in current ion traps may limit the fidelity of quantum operations.^{20–22} Some of these decoherence sources can be minimized by the cryogenic environment. One source is the motional heating caused by electrical noise in the trap electrodes. Studies of the dependence of the ion heating rates on the trap dimensions show that the main component of the heating is anomalous heating, which dominates the Johnson noise.^{2–6} Previous experiments with the trap electrodes cooled to 150 K showed a reduction in the anomalous heating rate at least one order of magnitude compared to electrodes kept at room temperature.² Recent experiments with the ion trap electrodes cooled to 6 K showed an anomalous heating rate reduction of between seven and eight orders of magnitude.⁷ Another cause for decoherence is collisions with the background gas molecules, which alter the internal quantum state of a trapped ion.²¹ Elastic collisions increase the kinetic energy, the trapped ion that may eject the ion from the ion trap. Inelastic collisions such as chemical reactions and charge exchange can produce a different ion species or neutralize the trapped ion.

Several other cryogenic ion traps were successfully operated in previous experiments in order to take advantage of

^{a)}Electronic mail: apaul@mit.edu.

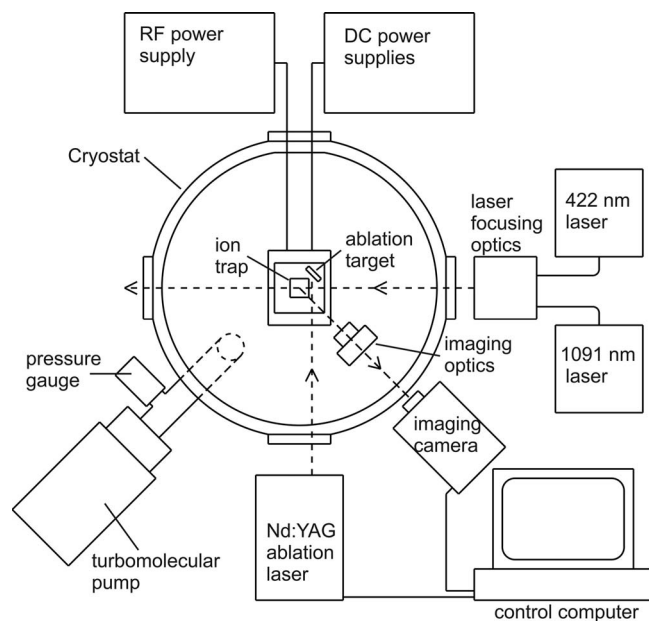


FIG. 1. Principal components used in the design of the cryostat systems. The fluorescence light is collected through the bottom viewport.

the very high vacuum and the superconducting properties of some materials offered by the cryogenic environments. A cryogenic linear rf ion trap for trapping $^{199}\text{Hg}^+$ was built by the NIST ion storage group²³ and used as a frequency standard. A similar system was employed by Okada *et al.*²⁴ for studying the Bohr–Weisskopf effect in unstable Be^+ isotopes. Cryogenic Penning ion traps were used by Gabrielse *et al.*¹ to trap antiprotons and carry out accurate measurements of the antiproton inertial mass. Also, cryogenic systems were built for trapping neutral atoms. Willems and Libbrecht²⁵ trapped Cs atoms in cryogenic magneto-optical and magnetic traps, and more recently Nirrengarten *et al.*²⁶ used a superconducting atom chip to trap Rb atoms.

This work is a continuation of Berkeland’s practice of building simple ion trap systems.²⁷ We extend it to include ion traps operated in cryogenic environments. We build our cryogenic ion trap systems around two commercially available cryostats: a liquid helium bath cryostat and a low vibration closed cycled cryostat. Depending on the experiment, each cryostat presents some benefits over the other. For example, the bath cryostat is naturally vibration-free while the closed cycled cryostat does not require a constant supply of cryogens or long term supervision. In order to reduce the mechanical complexity of the setups we kept the total number of the components to a minimum. For this reason, for instance, we opted not to use a hermetically sealed pillbox, which is usually employed in cryogenic systems to improve the vacuum of the working chamber.²³ We find that the trapped ion lifetime is not adversely affected by the choice of using a single vacuum space defined by the cryostat outer walls.

The rest of the paper is organized in two main sections. In the following section (Sec. II) we make a detailed description of the components involved in the construction of the two cryogenic systems, along with their principles of operation. In the last section (Sec. III) we finish with a perfor-

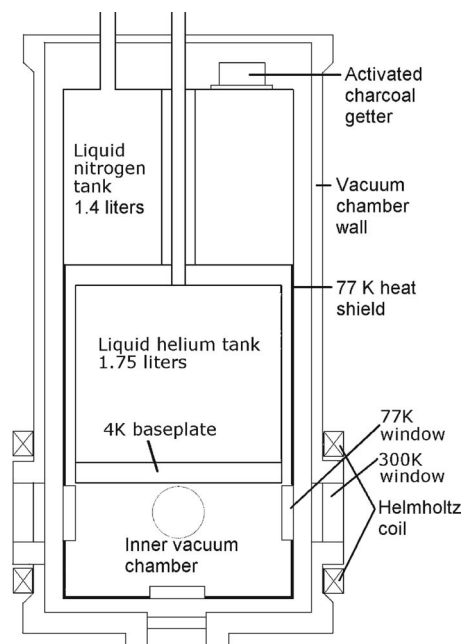


FIG. 2. Schematic of the bath cryostat vertical cross section. The side windows are used for lasers access and the bottom viewport for fluorescent light collection. The ion trap with its components are not shown (not to scale).

mance evaluation of these two cryogenic systems built around the bath cryostat and closed cycle cryostat.

II. THE CRYOSTAT SETUP

A good cryogenic ion trapping system must present some of the same characteristics as a room temperature system such as high vacuum and an easy method for ion loading. A low temperature system also brings new benefits such as the suppression of electrical noise and a faster turnaround time. On the other hand, the cryogenic systems present a few challenges which are not present in the room temperature systems. The cryogenic systems have a limited thermal load capacity, thus special attention must be paid to reduce the heat loads from radiation, conduction, and internal heat sources. Specifically for the cryogenic ion traps connection wires with low thermal conductivity are required, and they have to be heat sunk at each temperature stage of the cryostat. In the case of the surface-electrode ion trap due to the dielectric rf dissipation in the trap substrate, the trap must be carefully thermally anchored to the 4.2 K substrate. Another problem that must be addressed in the closed cycle cryostats due to their principle of operation is the damping of vibration.

In this section, we describe two cryostat setups we have constructed and evaluated for ~ 4 K operation of surface-electrode ion traps. First, in Sec. II A, we describe a bath type cryostat system, the workhorse for the majority of the experimental results presented in Sec. III. We have also constructed and evaluated a closed cycle cryostat system, which has the advantage that it does not necessitate a constant supply of cryogens. This cryostat design is described in Sec. II B. Both systems employ similar optical and control electronics subsystems, as described in the block diagram shown in Fig. 1.

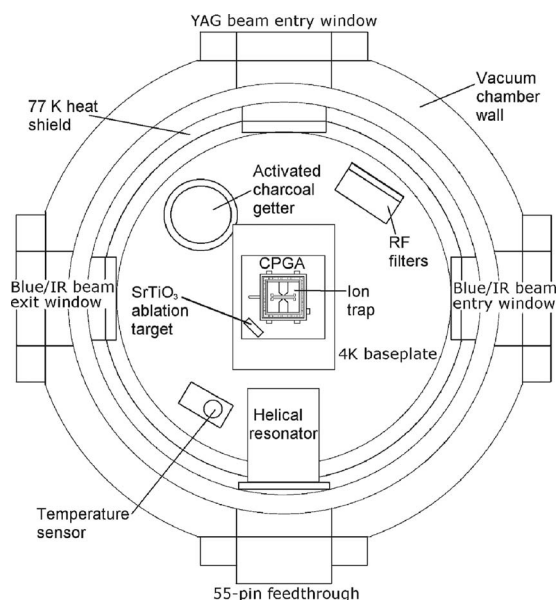


FIG. 3. Ion trap and the related components mounted on the 4.2 K baseplate of the bath cryostat (not to scale).

A. The bath cryostat

The bath cryostat system is built from a commercial liquid helium bath cryostat (QMC Instruments, Model TK 1813), depicted in Fig. 2. The trap and related components are mounted on the 4.2 K baseplate of the cryostat (Fig. 3, Fig. 4). The baseplate is heat sunk to the outside of a 1.75 l liquid helium reservoir that is surrounded by a 77 K shield connected to a 1.4 l liquid nitrogen tank. In this setup the 77 K inner chamber is open to the main vacuum chamber. The temperature of the helium baseplate is monitored with a ruthenium oxide sensor (LakeShore, RX-103A-AA). The sensor is mounted in small block of oxygen-free high-conductivity copper (OFHC) copper, which is anchored to the baseplate. To enhance thermal contact between the components mounted on the 77 K heat shield or on the 4.2 K baseplate Apiezon N high vacuum grease is used.

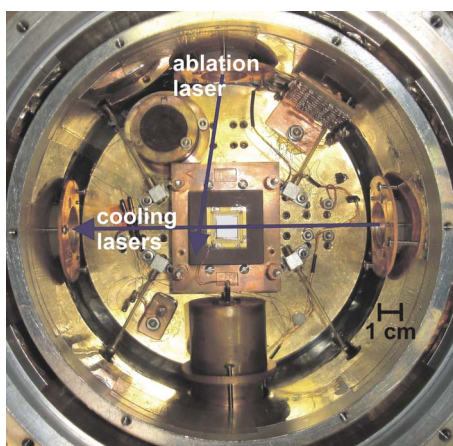


FIG. 4. (Color online) View of the bath cryostat working chamber. The ablation target is not installed; the rest of visible components are described in Fig. 3.

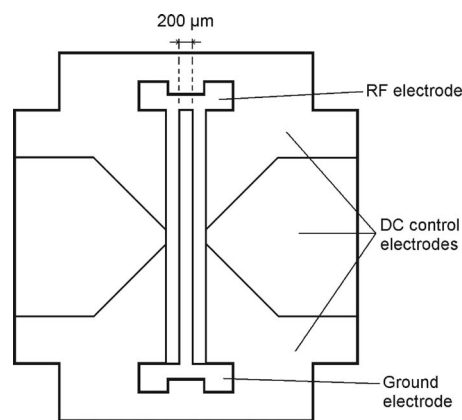


FIG. 5. Schematic of the ion trap. The exposed substrate area is minimized in order to reduce the accumulation of electrostatic charges (to scale).

1. Ion trap and electrical components

For the bath cryostat system we constructed a surface-electrode ion trap, with five dc control electrodes and two rf electrode.⁷ Compared to the traditional linear rf Paul trap with three-dimensional electrode geometry,²⁷ the surface-electrode ion trap has all the electrodes in a single plane. Also, the planar aspect of the trap offers the possibility to design complex electrode geometries. We fabricate the traps by evaporating a 2 μm silver thin film on a sapphire crystal substrate, followed by a wet etch process in which the electrodes are developed. The width of the ground electrode is 200 μm with a spacing between rf and ground electrodes of 10 μm (Fig. 5).

The ion traps are mounted in ceramic pin grid array (CPGA) chip carriers (Global Chip Materials, P/N PGA10047002) (Fig. 6) to simplify the process of trap swapping. A CPGA is a ceramic plate with metallic pads on one side, which are used to make electrical contacts to the chip, and with a corresponding number of pins on the other side such that the CPGA can be plugged in a suitable socket or electrical board. Moreover, the CPGAs we use have over 100 usable pins which permit us to connect ion traps with a large number of electrodes. We attach the trap to the CPGA using an epoxy resin (Varian, Torr Seal). The trap electrodes are connected to the CPGA pads using gold wire bonds. The CPGA is inserted into a socket that is thermally anchored to the helium baseplate through an OFHC copper pedestal (Fig. 6), through which electrical connections are made to the socket. To reduce the rf pickup on the dc electrodes, each dc

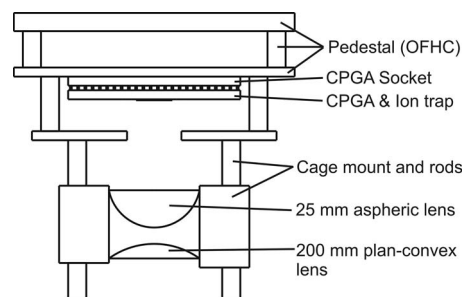


FIG. 6. Ion trap carrier and imaging optics ensemble. The top of the pedestal is mounted directly on to 4.2 K baseplate (not to scale).

electrode is connected to the ground through 1 nF ceramic capacitors soldered directly on the CPGA. Since the CPGA ceramic is not a very good thermal conductor, in order to heat sink the heat produced by the dielectric rf dissipation, we connect the trap with a copper wire mesh (78 mesh/cm, 0.05 mm wire diameter, 3×15 mm² area) to the copper pedestal. One end of the copper wire mesh is soldered to a silver layer ring (not shown in Fig. 5) deposited on the trap sapphire substrate and which surrounds the working electrodes, and the other end is soldered to the trap pedestal. To determine the trap temperature a ruthenium oxide sensor (Lake-Shore, RX-103A-AA) is attached to the trap surface with a high thermal conductivity epoxy (Emerson and Cuming, Stycast 2850 FT Blue). The measured trap temperatures at various applied rf voltage amplitudes were as follows: 5.5 K at no applied voltage, 6.0 K at 200 V, 7.5 K at 400 V, and 8.5 K at 600 V.

For applying dc bias potentials to the trap and reducing the heat transfer 36AWG phosphorus-bronze wire (Lake-shore, WSL-36-500) is used. In order to lower the heat transfer from the vacuum shield to the helium baseplate, the wires are wrapped once around the nitrogen heat shield. Before the dc wires reach the trap they go through a set of *RC* filters in order to reduce the electrical noise produced by the dc power supplies. The *RC* filters are thermally anchored to the helium baseplate with each filter having a time constant of 2 μ s. As a fail safe and to check the electrical continuity of the wire bonds, every dc electrode is connected to the exterior through two wires.

The rf voltage is applied to the trap through a helical resonator.^{28,29} The resonator is mounted on the 77 K heat shield (Fig. 3) in order to reduce the capacitive load from the wire which connects the trap, and also to increase its step up. For the ion trap we used in the bath cryostat setup, the helical resonator was built such that it has a voltage step up of 20, a loaded resonant frequency of 18.45 MHz, and a quality factor of 30, as measured at room temperature. When the helical resonator is cooled at 77 K its voltage step up increases to 100, and the quality factor improves to 67. With later resonator designs we have obtained quality factors up to 300. The quality factor can be increased further if the helical resonator is thermally anchored to the 4.2 K baseplate and it is built with superconducting wire.^{23,30-32} A Helmholtz coil is attached to the exterior of the cryostat since we need to address the Zeeman levels of the ⁸⁸Sr⁺ ion for Doppler cooling and resolved sideband cooling. The Helmholtz coil provides 0.6 mT at an applied current of 3 A.

2. Vacuum system and heat load

The UHV in cryogenic systems is obtained via the cryosorption and the cryotrapping of residual gas molecules on the cold surfaces, even in the presence of materials not compatible with room temperature UHV systems. To increase the cryosorption area, two activated charcoal getters are mounted in the cryostat, one at the top of the nitrogen shield and another on the helium baseplate. Each getter contains about 5 g of activated charcoal enclosed in a copper container. To cool the cryostat, we first pump it down using a turbopump while regenerating the getters by applying 180 mW of heat

through their heater coils. Once the pressure reaches 10^{-6} torr as measured at the turbopump inlet by a Bayard–Alpert pressure gauge, the cryostat is pre-cooled by filling both of its tanks with liquid nitrogen. When the pressure drops to 10^{-7} torr, the helium tank is flushed using compressed helium and a liquid helium fill is performed. The final working pressure indicated by the pressure gauge is 10^{-8} torr, although the pressure at the ion trap location is expected to be much lower due to the cryosorption and cryotrapping,¹ as it will be shown in Sec. III.

Experimentally we observe that the liquid helium hold time with the trap operating is 10 h, and with no operation 18 h. The hold time for nitrogen is around 12 h regardless if the trap is operating or not. We calculated that the heat load on the liquid helium tank with the rf turned off is 23 mW, from which 2 mW is heat conducted through the wiring and 15 mW is heat from the visible and infrared radiation, which passes through the windows. Since the main heat load is the outside radiation passing through the cryostat windows it suggests that the hold time for the cryogen can be increased by reducing the access windows diameter. From the liquid helium hold time, we estimate that running with typical trap parameters, the heat load from the rf dielectric dissipation is 33 mW. When there are no electrical connections to the cryostat and all the windows are blocked with metallic blanks the liquid helium has about 90 h hold time.

3. Optical setup

In order to run the ion trap three laser beams must be sent to the trapping location and a means for collecting the scattered photons by the trapped ions must be provided. Laser access to the inner vacuum chamber, where the trap is mounted, is provided by three windows on the side of the cryostat (Fig. 3) and a window at the bottom of the cryostat is used for ion imaging. Each shield of the cryostat has a set of windows. There is an outer set mounted on the room temperature vacuum shield which holds the vacuum in the cryostat while allowing optical access, and an inner set on the 77 K shield whose purpose is to absorb 300 K radiation and sink it into the nitrogen, increasing the helium hold time. For the outer set, we use 50 mm BK7 windows (Melles Griot, 02WBK226), and for the inner set 1 inch BK7 windows (Thorlabs, WG11050). All the access windows used in the bath cryostat system have no antireflection coatings.

For imaging the ions an aspheric lens is placed above the trap to collimate the fluorescence from the ions. The aspheric lens was chosen such that it had a good light collection and it can be positioned far enough from the trap so that the electrostatic charges on it do not affect the ions. We opted for an aspheric lens made by Edmund Optics (NT47-730) with an effective focal length (EFL) of 25 mm and $f/1$, which collects 5.3% of the light emitted by the trapped ions. The aspheric lens and a 200 mm planoconvex lens, which focus the image outside the cryostat, are placed in a 1 in. cage mount from Thorlabs. The entire ensemble can slide on four cage rods, as shown in Fig. 6. Although there is a mismatch in the thermal expansion coefficients between the lenses and cage mount, the lenses have survived hundreds of cool down cycles. The final image is focused onto electron multiplying

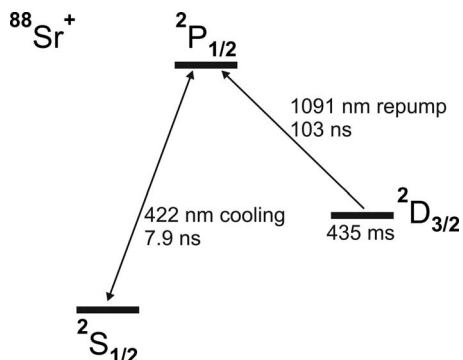


FIG. 7. Partial energy levels of $^{88}\text{Sr}^+$. The $S_{1/2} \leftrightarrow P_{1/2}$ transition is used for Doppler cooling (Ref. 34). The population decayed to the metastable $D_{3/2}$ level is repumped back to $P_{1/2}$ level by the 1091 nm laser.

charge coupled device (EMCCD) camera (Princeton Instruments, IMAX/PHOTONMAX 512) by two 100 mm plano-convex lenses placed outside the cryostat. The imaging system has $4\times$ magnification and an overall measured resolution of $6\ \mu\text{m}$.

The energy levels of $^{88}\text{Sr}^+$ and the transitions used to conduct the experiments reported in this paper are shown in Fig. 7. The $S_{1/2} \leftrightarrow P_{1/2}$ transition is used for Doppler cooling the trapped ions and is driven by a 422 nm laser with $20\ \mu\text{W}$ power focused to a $33\ \mu\text{m}$ spot size. The $P_{1/2}$ state has a probability of 1 in 13 to decay to the metastable $D_{3/2}$ level (435 ms lifetime). To avoid the depopulation of the Doppler cooling transition, we use a 1091 nm repumping laser with $50\ \mu\text{W}$ power focused to a $100\ \mu\text{m}$ spot size. The light necessary to drive these transitions is produced from two external cavity diode lasers with optical feedback for frequency stabilization. The details of the lasers used in this experiment are described elsewhere.³³ This liquid helium bath cryostat system was used to cool a single trapped ion to the motional ground state with a 95% fidelity.⁷

B. Closed cycle cryostat

The closed cycle cryostat system is constructed around a low vibration cryostat produced by Advanced Research Systems (Model GMX-20B). The cryocooler head of the cryostat is mechanically decoupled from sample tip and vacuum chamber around it. The cryostat interface has two cooling stages, where the minimum temperature of the first stage is 40 K, and the minimum temperature of the second stage is 4.2 K. The cryostat interface comes with an 8 in. conflat (CF) flange and the UHV chamber is built by attaching a full CF nipple, a spherical octagon (Kimball Physics, Model MCF800-SO2000800-A) and an 8 in. glass viewport. The experiment chamber is made from an OFHC cooper tube attached to the 4.2 K cold tip. The cold tip and experiment chamber are surrounded by a custom made radiation shield attached to the 40 K stage of the cryostat (Fig. 8, Fig. 9). Only the room temperature outer chamber is vacuum sealed, with the inner chambers nonhermetically closed. The temperatures of the 4.2 and 40 K stages are monitored with two silicon diodes (LakeShore, DT-670A-SD).

One concern due to the principle of operation of the closed cycle cryostats is the vibration transmitted to the ion trap during experiments. Since the cryocooler head is me-

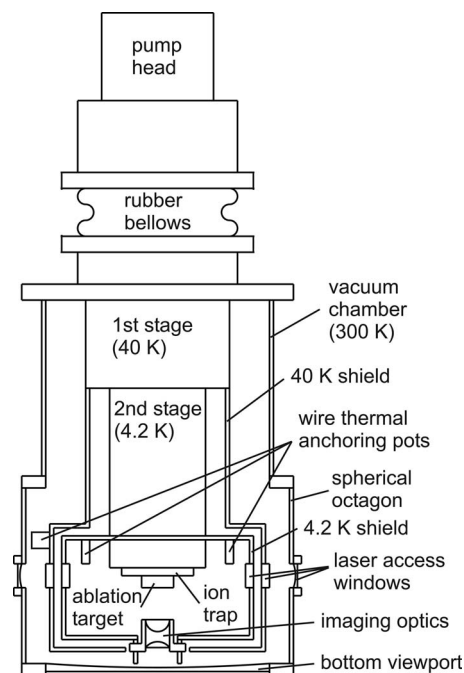


FIG. 8. Schematic cross section through the closed cycle cryostat. The imaging optics anchored onto 4 K radiation shield is exposed directly to the 300 K radiation from the bottom viewport (not to scale).

chanically decoupled from the cryostat interface, it must be supported such that the vibration transfer to the cryostat interface is minimized. In our setup we chose to place the cryostat on an optical table with the cryocooler head supported independently by a holder anchored to the ceiling.

The vibration amplitudes of the cold tip were measured with a Michelson interferometer with the light provided by the 422 nm laser. During the operation of the cryocooler compressor we found that the maximum displacement of the cold tip was below 106 nm (one quarter of an interference fringe). A typical vibration power spectrum of the cold tip is shown in Fig. 10. The cryocooler head has a pumping repetition rate of 2 Hz, which can be observed in Fig. 10 inset.

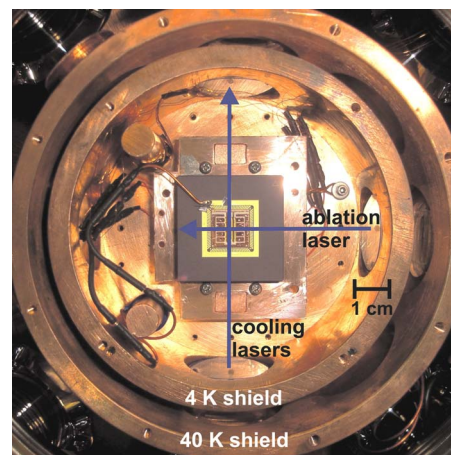


FIG. 9. (Color online) View of the closed cycle cryostat working chamber. The ablation target is not installed; the rest of visible components are described in Fig. 8. Note: the ion trap employed in this setup is different from the one used in the bath cryostat system (Fig. 5). For a detailed description of this ion trap, consult Ref. 35.

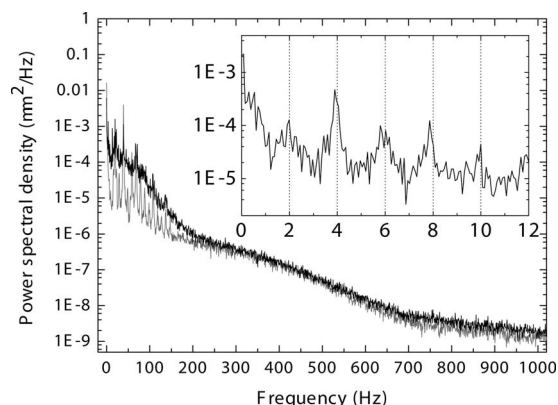


FIG. 10. Vibration power spectrum of the closed cycle cryostat. The vibration power spectrum was measured with the cryostat compressor turned off (gray curve) and on (black curve). The inset shows the lower part of the spectrum where the fundamental and higher harmonics of the cryocooler head vibration can be distinguished. The spectrum has 2.5 kHz bandwidth and 0.17 Hz resolution.

1. Ion trap and electrical components

The ion trap used in this setup was built by patterning the copper electrodes on a printed circuit board.^{17,35} The ion trap and its CPGA are installed on a pedestal which is identical with the one used in the bath cryostat setup. The pedestal is thermally anchored to the 4.2 K cold tip. We found that the temperatures of the ion trap as function of the applied rf voltage amplitude were 7.2 K at no applied voltage, 8.8 K at 500 V, and 9.4 K at 650 V.

dc bias potentials are applied to the trap through the same phosphorus-bronze wires used in the bath cryostat. The rf potential is delivered through a 20 AWG copper wire since for this setup the helical resonator is mounted outside the cryostat. To heat sink the heat conducted by the wires from exterior, the wires are wrapped around copper posts mounted on the 40 K cooling stage heat shield and on the 4.2 K baseplate.

2. Vacuum system and heat load

To attain the UHV environment the cryostat is first pumped with a turbomolecular pump to 5×10^{-7} torr measured by an inverted magnetron pressure gauge attached at the pump inlet. In the second stage the cryostat vacuum chamber is isolated from the turbomolecular pump and the cool down process is started, while the pumping is continued by a small ion pump attached directly to the spherical octagon. The cooling of the cryostat takes 4 h, with the cold stage reaching a final temperature of 5.2 K and the pressure at the ion pump getting to 3×10^{-9} torr. The computed heat load from radiation and conduction to the cold tip is about 1 W, which agrees well with cryostat heat load map supplied by the manufacturer. The highest heat load (0.4 W) is from the 300 K radiation and visible light absorbed by the exposed lenses assembly. In the future we plan to decouple the two lenses and mount the 75 mm lens on the 4 K stage bottom plate, and also reduce the light transmitted through the bottom viewport by switching to a smaller diameter viewport. For comparison the thermally unloaded cold tip reaches 4.2 K after 2 h of cooling.

3. Optical setup

To allow for laser access to the trap, a set of three 2.75 in. viewports are attached on the side of the spherical octagon. The access through the 40 and 4.2 K heat shields is provided by six 1 in. BK7 windows (Thorlabs, WG11050), with three windows mounted on each shield. The imaging of the ions is done through the bottom 8 in. viewport. The light scattered by the trapped ions is collected and collimated by an aspheric lens (Edmund Optics, NT49-100, 22.50 mm EFL, $f/1.50$). The collimated light is focused outside the cryostat by a 75 mm planoconvex lens. Both lenses are mounted in 1 in. Thorlabs cage mount, which can slide on four posts attached to the bottom plate of the cryostat second stage chamber (Fig. 8). Two lenses, 75 and 150 mm achromatic doublets are installed outside the cryostat, to focus the final image on a CCD camera (SBIG, ST-402ME). The entire imaging system has a $7.5\times$ magnification and provides a theoretical resolution of $1.2 \mu\text{m}$. For this setup we use a laser system similar to the one used for the bath cryostat setup.

III. PERFORMANCE EVALUATION

A. Ion loading efficiency

In room temperature systems there are several methods for ion loading. In our systems we successfully tested the following methods: the neutral atoms produced by a resistively heated oven are ionized by impact with electrons emitted by an e-gun or through laser photoionization, and the ions are directly produced by laser ablation of a solid target or indirectly by photoionization of the neutrals inside the ablation plume. For our experiments, we chose the laser ablation loading method as it has some advantages compared to other loading methods. During the ion loading from an oven, the heat production is of the order of hundreds of Joules, but in comparison a single ablation pulse of 1.5 mJ can load our trap. If the ion trap was operated in a cryostat that could reach temperatures in the milliKelvin range, the system would likely not be able to handle the dissipated heat from an oven. Another benefit of laser ablation is that it can produce ions from materials with very high melting temperature. Surface-electrode traps tend to have a lower trap depth than a linear rf ion trap of comparable dimensions, and thus provide a stringent test for the laser ablation ion loading method.³⁵

The mechanism of ion trapping from the ablation plume was described by Hashimoto *et al.*¹² The fast electrons from the ablation plume arrive first to the trap and cancel the rf voltage applied to the trap, thus allowing the slower moving ions to enter the trapping region even if their kinetic energy is lower than the trap well depth. To produce the ablation plume, we use for both cryostat setups a Q -switched Nd:YAG (yttrium aluminum garnet) laser (continuum electro-optics, Minilite II), which produces a maximum energy in its third harmonic (355 nm) of 8 mJ per pulse. The pulse duration is around 5 ns. The beam is focused onto the ablation target to spot size of 0.5 mm. Because metallic ^{88}Sr easily oxidizes in open atmosphere a single crystal of SrTiO_3 (MTI Crystal, STOa100505S1) placed 15 mm from the center of the trap (Fig. 3) is used as ablation target. The YAG

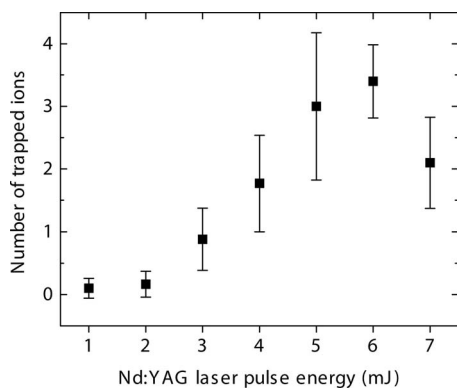


FIG. 11. Ion loading efficiency per ablation pulse vs laser pulse energy in the bath cryostat system.

beam is steered by a high-energy mirror (CVI laser, Y3-1025-45-P). The energy loss in optics is around 1 mJ, thus the maximum energy delivered to the target is 7 mJ as measured with a pyroelectric meter.

In order to study the ion loading efficiency from the ablation plume in the bath cryostat setup, the energy of the Nd:YAG pulse on the target was varied from 1 mJ to 7 mJ (1–7 MW/mm²). The trap was operated at an applied rf voltage of 200 V at a frequency of 18.45 MHz, with a trap depth of 0.34 eV, and with the ions located at 200 μm above the trap. The endcap dc electrodes were maintained at 7.5 V and the middle dc electrodes were maintained at –5 V (Fig. 5). The secular frequencies of the trap were as follows: 550 kHz, 1.52 MHz, and 1.87 MHz. During the experiment, the Doppler cooling laser was detuned 30 MHz below the transition frequency. The maximum efficiency in ion loading was obtained at 6 mJ laser pulse energy as shown in Fig. 11.

B. Ion lifetime

One of the primary reasons to choose a cryogenic systems is that the vapor pressure of most gasses is negligible allowing the systems to reach very high vacuum in a short time. Most of the residual background gas in the bath cryostat comes from the 77 K heat shield and in the closed cycle cryostat from the 4 K shield. The residual gas species with an appreciable vapor pressure at 77 K are He, O₂, N₂, and H₂ and at 4.2 K only He and H₂.³⁶

The ion lifetime is typically limited by collisions, charge exchange, or chemical reactions with residual background gas.^{21,37–39} The elastic collisions cannot transfer enough kinetic energy to the laser-cooled trapped ion to eject it out of the trap since the residual molecules have a kinetic energy no higher than 77 K and they are lighter than the ⁸⁸Sr⁺ ion, which is trapped at 3500 K (0.3 eV) depth in the bath cryostat or 4700 K (0.4 eV) in the closed cycle cryostat. The ionization energies of the residual molecules and atoms (He 24.58 eV, O₂ 12.30 eV, N₂ 15.60 eV, and H₂ 15.20 eV)^{40,41} from the background gas are higher than the ionization energy of the ⁸⁸Sr atom (5.69 eV). Even if it is assumed that the ⁸⁸Sr⁺ ion is in the excited *P*_{1/2} state and the energy of the 422 nm photon (2.97 eV) is transferred toward the ionization of the colliding atom or molecule the charge exchange reactions cannot occur. Chemical reactions between the ion and

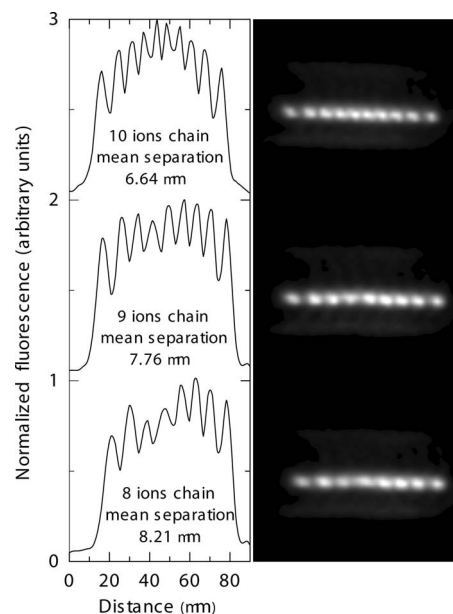


FIG. 12. The ion chain used to determine the lifetime of a single ion in the bath cryostat system. The right panel shows the initial chain of ten ions and the subsequent two chains where one ion, and two ions respectively, were lost.

the background gas remain as the only possibility through which a laser-cooled ion held in a cryogenic trap can be lost. Among all the possible chemical reactions between the ⁸⁸Sr⁺ and the residual gas inside the bath cryostat system,^{21,37–41} in which the kinetic energy of the final ⁸⁸Sr compound is comparable with the trapping potential depth, is



where ⁸⁸Sr⁺* is the ion in the *P*_{1/2} state. In the above reaction the SrO⁺ has a kinetic energy of 0.3 eV, which is enough to escape from the trap operated in the bath cryostat system. Inside the closed cycle cryostat the most energetic chemical reaction which can take place is



in which case the SrH⁺ has a kinetic energy of only 0.02 eV, not enough to escape the trap.

To determine the lifetime of a Doppler cooled single ion trapped in the liquid helium bath cryostat setup, we observed the rate at which ions were lost from an initial chain of ten ions. Experimentally, we found a lifetime of 680 min for a single ion. During the experiment no ion became a nonresonant ion due to chemical reactions with the residual background gas (Fig. 12). The Doppler cooling laser (422 nm) and the repumping laser (1091 nm) intensities were chosen such that the ⁸⁸Sr⁺ ion spent approximately a third of the time in the *P*_{1/2} excited state. Without Doppler cooling we measured a single ion lifetime of 400 s.

Knowing the lifetime of a single atom trapped in the bath cryostat system and the collision rate between the trapped ions and residual molecules, an estimate of the O₂ partial pressure at the trap location can be made. The collision rate can be found from the classical Langevin theory of ion-molecule collisions^{21,39}

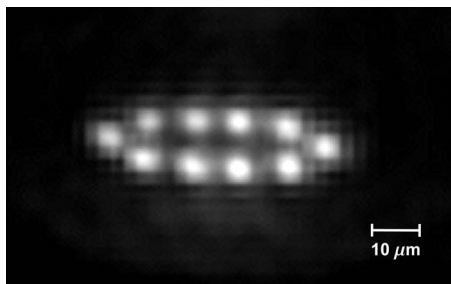


FIG. 13. A typical small ion crystal trapped in the closed cycle cryostat system. The ion crystal lies $750 \mu\text{m}$ above the ion trap at a trapping potential depth of 0.40 eV .

$$\Gamma = \frac{ne}{2\epsilon_0} \sqrt{\frac{\alpha}{\mu}},$$

where n is the density of the background gas molecules, α is the polarizability of the molecules, and μ is the reduced mass of ion-molecule system. By assuming that the background gas has a temperature of 77 K and neglecting the kinetic energy of the trapped ions, we estimate an upper bound on O_2 partial pressure of $2 \times 10^{-12} \text{ torr}$.

If residual gas is not chemically reactive with the ion, then they can still interact via elastic collisions. Collisions can heat or cool the ions depending on the mass and temperature of the buffer gas.^{42–44} Injecting He buffer gas provides a means of cooling the ions to cryogenic temperatures that is insensitive to the ion state and does not require laser cooling. We characterized the ion lifetime without laser cooling in the presence of He buffer gas at a partial pressure of $7 \times 10^{-6} \text{ torr}$ and at a temperature of 7 K using the closed cycle cryostat. After 12 h we found there was no discernible drop in the ion cloud fluorescence intensity compared with its initial intensity.

To characterize the ion lifetime in the absence of He buffer gas and with laser cooling in the closed cycle cryostat we employed the same method as for the bath cryostat. We observed an ion chain of four ions for a period of 12 h, in which none of the ions got lost or became nonfluorescent (Fig. 13). This sets a lower bound for a single ion lifetime to 2500 min, which is in agreement with an unlimited ion lifetime obtained from the theoretical estimate.

From the observed ion lifetime in both cryogenic systems it is apparent that beside the trap depth, the most important factor which influences the ion lifetime is the composition of the residual gas. For instance, the bath cryostat, which has most of the working chamber at 77 K , does not cryopump efficiently the molecular oxygen, which subsequently chemically reacts with trapped ions and thus limiting their lifetime.

IV. CONCLUSION

We have shown that the cryogenic ion traps offer many advantages and we successfully managed some problems related to the operation of ion traps in cryogenic environments. The ion traps can be swapped very quickly and UHV pressures can be reached in less than 12 h, which decreases the time necessary to implement new trap designs. Also new

materials which are not room temperature UHV compatible can be used in the design of these cryogenic systems. The pressures obtained inside these cryogenic systems permit for the laser-cooled ions to have a trapped lifetime of 680 min for the bath cryostat setup and over 2500 min for the closed cycle cryostat setup. To load the ion traps we employed an ion source based on laser ablation. By this method we can load surface-electrode ion traps with depths as low as 0.3 eV . In addition, the low temperature of these cryogenic systems offers the possibility of interacting the ions with superconducting systems.

- ¹G. Gabrielse, D. Phillips, W. Quint, H. Kalinowsky, G. Rouleau, and W. Jhe, *Phys. Rev. Lett.* **74**, 3544 (1995).
- ²L. Deslauriers, S. Olmschenk, D. Stick, W. K. Hensinger, J. Sterk, and C. Monroe, *Phys. Rev. Lett.* **97**, 103007 (2006).
- ³F. Diedrich, J. C. Bergquist, W. M. Itano, and D. J. Wineland, *Phys. Rev. Lett.* **62**, 403 (1989).
- ⁴L. Deslauriers, P. C. Haijan, P. J. Lee, K. A. Brickman, B. B. Blinov, M. J. Madsen, and C. Monroe, *Phys. Rev. A* **70**, 043408 (2004).
- ⁵C. Roos, T. Zeiger, H. Rohde, H. C. Nägerl, J. Eschner, D. Leibfried, F. Schmidt-Kaler, and R. Blatt, *Phys. Rev. Lett.* **83**, 4713 (1999).
- ⁶Q. A. Turchette, D. Kielpinski, B. E. King, D. Leibfried, D. M. Meekhof, C. J. Myatt, M. A. Rowe, C. A. Sackett, C. S. Wood, W. M. Itano, C. Monroe, and D. J. Wineland, *Phys. Rev. A* **61**, 063418 (2000).
- ⁷J. Labaziewicz, Y. Ge, P. Antohi, D. Leibbrandt, K. R. Brown, and I. L. Chuang, *Phys. Rev. Lett.* **100**, 013001 (2008).
- ⁸D. Leibbrandt, B. Yurke, and R. Slusher, *Quantum Inf. Comput.* **7**, 52 (2007).
- ⁹V. H. S. Kwong, *J. Phys. (Paris)* **50**, 413 (1989).
- ¹⁰C. G. Gill, A. W. Garrett, N. S. Nogar, and P. H. Hemberger, *Rapid Commun. Mass Spectrom.* **11**, 551 (1997).
- ¹¹R. deCarvalho, N. Brahm, B. Newman, J. M. Doyle, D. Kleppner, and T. Greytak, *Can. J. Phys.* **83**, 293 (2005).
- ¹²Y. Hashimoto, L. Matsuoka, H. Osaki, Y. Fukushima, and S. Hasegawa, *Jpn. J. Appl. Phys., Part 1* **45**, 7108 (2006).
- ¹³S. Kitazawa, K. Okada, T. Nakamura, S. Ohtani, and H. Takuma, *Jpn. J. Appl. Phys., Part 1* **32**, 5147 (1993).
- ¹⁴D. Kielpinski, C. Monroe, and D. J. Wineland, *Nature (London)* **417**, 709 (2002).
- ¹⁵T. Schaez, D. Leibfried, J. Chiaverini, M. D. Barrett, J. Britton, B. DeMarco, W. M. Itano, J. D. Jost, C. Langer, and D. J. Wineland, *Appl. Phys. B: Lasers Opt.* **79**, 979 (2004).
- ¹⁶J. Chiaverini, R. B. Blakestad, J. Britton, J. D. Jost, C. Langer, D. Leibfried, R. Ozeri, and D. J. Wineland, *Quantum Inf. Comput.* **5**, 419 (2005).
- ¹⁷C. E. Pearson, D. R. Leibbrandt, W. S. Bakr, W. J. Mallard, K. R. Brown, and I. L. Chuang, *Phys. Rev. A* **73**, 032307 (2006).
- ¹⁸S. Seidelin, J. Chiaverini, R. Reichle, J. J. Bollinger, D. Leibfried, J. Britton, J. H. Wesenberg, R. B. Blakestad, R. J. Epstein, D. B. Hume, W. M. Itano, J. D. Jost, C. Langer, R. Ozeri, N. Shiga, and D. J. Wineland, *Phys. Rev. Lett.* **96**, 253003 (2006).
- ¹⁹L. Tian, P. Rabl, R. Blatt, and P. Zoller, *Phys. Rev. Lett.* **92**, 247902 (2004).
- ²⁰J. I. Cirac and P. Zoller, *Phys. Rev. Lett.* **74**, 4091 (1995).
- ²¹D. J. Wineland, C. Monroe, W. M. Itano, D. Leibfried, B. E. King, and D. M. Meekhof, *J. Res. Natl. Inst. Stand. Technol.* **103**, 259 (1998).
- ²²D. F. V. James, *Appl. Phys. B: Lasers Opt.* **66**, 181 (1998).
- ²³M. E. Poitzsch, J. C. Bergquist, W. M. Itano, and D. J. Wineland, *Rev. Sci. Instrum.* **67**, 129 (1996).
- ²⁴K. Okada, M. Wada, T. Nakamura, I. Katayama, L. Boesten, and S. Ohtani, *Jpn. J. Appl. Phys., Part 1* **40**, 4221 (2001).
- ²⁵P. A. Willems and K. G. Libbrecht, *Phys. Rev. A* **51**, 1403 (1995).
- ²⁶T. Nirrengarten, A. Qarry, C. Roux, A. Emmert, G. Nogues, M. Brune, J. M. Raimond, and S. Haroche, *Phys. Rev. Lett.* **97**, 200405 (2006).
- ²⁷D. J. Berkeland, *Rev. Sci. Instrum.* **73**, 2856 (2002).
- ²⁸R. J. Deri, *Rev. Sci. Instrum.* **57**, 82 (1986).
- ²⁹R. Diehl, D. M. Wheatley, and T. G. Castner, *Rev. Sci. Instrum.* **67**, 3904 (1996).
- ³⁰A. E. R. Centeno, P. S. Excell, T. W. Button, and N. M. Alford, *IEEE Trans. Appl. Supercond.* **5**, 19 (1995).
- ³¹M. J. Lancaster, T. S. M. Maclean, Z. Wu, A. Porch, P. Woodall, and N. N.

- Alford, IEE Proc., Part H: Microwaves, Antennas Propag. **139**, 149 (1992).
- ³²L. Frunzio, A. Wallraff, D. Schuster, J. Majer, and R. Schoelkopf, *IEEE Trans. Appl. Supercond.* **15**, 860 (2005).
- ³³J. Labaziewicz, P. Richerme, K. R. Brown, I. L. Chuang, and K. Hayasaka, *Opt. Lett.* **32**, 572 (2007).
- ³⁴S. Mannervik, J. Lidberg, L. O. Norlin, P. Royen, A. Schmitt, W. Shi, and X. Tordoir, *Phys. Rev. Lett.* **83**, 698 (1999).
- ³⁵D. R. Leibbrandt, R. J. Clark, J. Labaziewicz, P. Antohi, W. Bakr, K. R. Brown, and I. L. Chuang, *Phys. Rev. A* **76**, 055403 (2007).
- ³⁶R. A. Haefer, *J. Phys. E* **14**, 273 (1981).
- ³⁷B. Roth, P. Blythe, H. Wenz, H. Daerr, and S. Schiller, *Phys. Rev. A* **73**, 042712 (2006).
- ³⁸K. Sugiyama and J. Yoda, *Phys. Rev. A* **55**, R10 (1997).
- ³⁹*Practical Aspects of Ion Trap Mass Spectrometry*, edited by R. E. March and J. F. J. Todd (CRC, Boca Raton, 1995), Vol. I.
- ⁴⁰NIST Chemistry WebBook, NIST Standard Reference Database, 2005.
- ⁴¹*CRC Handbook of Chemistry and Physics*, 88th ed., edited by D. R. Lide (CRC, Boca Raton, 2007).
- ⁴²Y. Moriwaki, M. Tachikawa, Y. Maeno, and T. Shimizu, *Jpn. J. Appl. Phys., Part 2* **31**, L1640 (1992).
- ⁴³Y. Moriwaki, M. Tachikawa, and T. Shimizu, *Jpn. J. Appl. Phys., Part 1* **35**, 757 (1996).
- ⁴⁴Y. Moriwaki and T. Shimizu, *Jpn. J. Appl. Phys., Part 1* **37**, 344 (1998).